



STAR BOTTLES

## 100GM PP JAR LONG

**Categories:** [Body Care](#), [COSMETICS AND PERSONAL CARE](#), [Face Care](#)

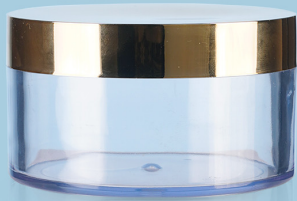
**IDEAL FOR PACKING:**CREAME, Powder

**COLOUR:**WHITE

**MOC:**PP

**SHAPE:**ROUND

**VOLUME:**100 GM



STAR BOTTLES

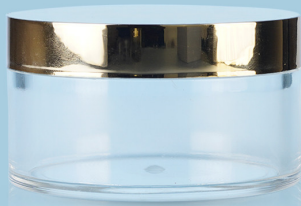
## 200GM SAN JAR WIDE WITH GOLDEN CAP

**Categories:** [Body Care](#), [COSMETICS AND PERSONAL CARE](#), [Face Care](#)

**IDEAL FOR PACKING:**CREAME, Powder

**MOC:**SAN

**SHAPE:**ROUND



STAR BOTTLES

## 100GM SAN JAR WIDE

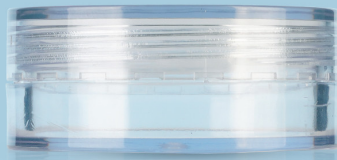
**Categories:** [Body Care](#), [COSMETICS AND PERSONAL CARE](#), [Face Care](#)

**IDEAL FOR PACKING:**CREAME, Powder

**MOC:**SAN

**SHAPE:**ROUND, WIDE

**VOLUME:**100 GM



STAR BOTTLES

## 50GM SAN JAR WITH CLEAR CAP

**Categories:** [Body Care](#), [COSMETICS AND PERSONAL CARE](#), [Face Care](#)

**IDEAL FOR PACKING:**CREAME, Powder

**MOC:**SAN

**SHAPE:**ROUND

**VOLUME:**50 GM



STAR BOTTLES

## 50GM PP JAR WITH GOLDEN CAP

**Categories:** [Body Care](#), [COSMETICS AND PERSONAL CARE](#), [Face Care](#)

**IDEAL FOR PACKING:**CREAME, Powder

**MOC:**PP

**SHAPE:**ROUND

**VOLUME:**50 GM



STAR BOTTLES

## 50GM DOUBLE WALL ACRYLIC JAR CRYSTAL

**Categories:** [Body Care](#), [COSMETICS AND PERSONAL CARE](#), [Face Care](#)

**IDEAL FOR PACKING:**CREAME, Powder

**MOC:**ACRYLIC

**SHAPE:**RECTANGLE

**VOLUME:**50 GM



STAR BOTTLES

## 50GM CREAME JAR FLAT EDGE

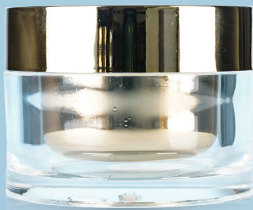
**Categories:** [Body Care](#), [COSMETICS AND PERSONAL CARE](#), [Face Care](#)

**IDEAL FOR PACKING:**CREAME, Powder

**MOC:**PP

**SHAPE:**ROUND

**VOLUME:**50 GM



STAR BOTTLES

## 50GM ACRYLIC DOUBLE WALL JAR

**Categories:** [Body Care](#), [COSMETICS AND PERSONAL CARE](#), [Face Care](#)

**IDEAL FOR PACKING:**CREAME, Powder

**MOC:**ACRYLIC

**SHAPE:**ROUND



STAR BOTTLES

## 50GM ACRYLIC DOUBLE WALL JAR OVAL

**Categories:** [Body Care](#), [COSMETICS AND PERSONAL CARE](#), [Face Care](#)

**IDEAL FOR PACKING:**CREAME, Powder

**MOC:**ACRYLIC

**VOLUME:**50 GM



STAR BOTTLES

## 30 GM ACRYLIC DOUBLE WALL JAR OVAL

**Categories:** [Body Care](#), [COSMETICS AND PERSONAL CARE](#), [Face Care](#)

**IDEAL FOR PACKING:**CREAME, Powder

**MOC:**ACRYLIC

**SHAPE:**OVAL

**VOLUME:**30 GM



STAR BOTTLES

## 100 ML ROUND PET BOTTLE

**Categories:** [Body Care](#), [Face Care](#), [Hair Care](#), [Handwash & Sanitizers](#)

**CODE:**I-000489

**COLOUR:**TRANSPARENT

**MOC:**PET

**NECK SIZE (MM):**20

**WEIGHT:**11.5

**SHAPE:**ROUND

**TOTAL HEIGHT(CM):**10

**VOLUME:**100 ML

**MASTER CARTON:**792/BOX



STAR BOTTLES

## 200 ML AMBER PET BOTTLE ASTA

**Categories:** [Body Care](#), [Face Care](#), [Hair Care](#)

**CODE:**I-001003

**COLOUR:**AMBER

**MOC:**PET

**NECK SIZE (MM):**24

**SHAPE:**ROUND

**TOTAL HEIGHT(CM):**15

**VOLUME:**200 ML

**MASTER CARTON:**360/BOX



STAR BOTTLES

## 120 ML ALOEVERA GEL BOTTLE

**Categories:** [Body Care](#), [Face Care](#), [Hair Care](#)

**CODE:**I-000605

**COLOUR:**GREEN

**MOC:**PET

**SHAPE:**FLAT

**TOTAL HEIGHT(CM):**10

**VOLUME:**120 ML

**MASTER CARTON:**100/PKT



STAR BOTTLES

## 200 ML ROUND HDPE BOTTLE BLACK

**Categories:** [Body Care](#), [Face Care](#), [Hair Care](#)

**CODE:**I-001364

**COLOUR:**BLACK

**MOC:**HDPE

**NECK SIZE (MM):**25

**WEIGHT:**21

**SHAPE:**ROUND

**TOTAL HEIGHT(CM):**17.5

**VOLUME:**200 ML

**MASTER CARTON:**1000/BAG



STAR BOTTLES

## 100 ML PET BOTTLE SQUARE

**Categories:** [Body Care](#), [Face Care](#), [Hair Care](#), [Handwash & Sanitizers](#)

**CODE:**I-000020

**IDEAL FOR PACKING:**Syrup, Thailam

**COLOUR:**TRANSPARENT

**MOC:**PET

**NECK SIZE (MM):**20

**WEIGHT:**16

**SHAPE:**SQUARE

**TOTAL HEIGHT(CM):**10

**VOLUME:**100 ML

**OVERFLOW CAPACITY:**107 ML

**MASTER CARTON:**784/BOX



STAR BOTTLES

## 100 ML JLI AMBER

**Categories:** [Body Care](#), [Face Care](#), [Hair Care](#)

**CODE:**I-000490

**COLOUR:**AMBER

**MOC:**PET

**NECK SIZE (MM):**20

**WEIGHT:**11.5

**SHAPE:**ROUND

**TOTAL HEIGHT(CM):**10

**VOLUME:**100 ML

**MASTER CARTON:**1020/BOX





STAR BOTTLES

## 50 GM CREAME JAR

**Categories:** [Body Care](#), [Face Care](#), [Hair Care](#)

**CODE:**I-000340

**COLOUR:**BLACK, WHITE

**MOC:**PP

**NECK SIZE (MM):**56

**SHAPE:**ROUND

**TOTAL HEIGHT(CM):**5

**VOLUME:**50 GM

**MASTER CARTON:**360/BAG



STAR BOTTLES

## 50 ML AIRLESS BOTTLE

**Categories:** [Body Care](#), [Face Care](#)

**CODE:**I-000345

**COLOUR:**WHITE

**MOC:**PP

**NECK SIZE (MM):**38

**SHAPE:**ROUND

**TOTAL HEIGHT(CM):**8

**VOLUME:**50 ML

**MASTER CARTON:**500/PKT



STAR BOTTLES

## 30 ML AIRLESS BOTTLE

Categories: [Body Care](#), [Face Care](#)

CODE:I-000247

COLOUR:WHITE

MOC:PP

NECK SIZE (MM):38

SHAPE:ROUND

TOTAL HEIGHT(CM):6

VOLUME:30 ML

MASTER CARTON:100/PKT



STAR BOTTLES

## 100ML ROUND HDPE BOTTLE BLACK

Categories: [Body Care](#), [Face Care](#), [Hair Care](#)

CODE:I-001355

COLOUR:BLACK

MOC:HDPE

NECK SIZE (MM):20

WEIGHT:14

SHAPE:ROUND

VOLUME:100 ML

MASTER CARTON:500/BAG



STAR BOTTLES

## 15 ML AIRLESS BOTTLES

**Categories:** [Body Care](#), [Face Care](#)

**CODE:**I-000075

**COLOUR:**WHITE

**MOC:**PP

**WEIGHT:**38

**SHAPE:**ROUND

**TOTAL HEIGHT(CM):**4

**VOLUME:**15 ML

**MASTER CARTON:**100/PKT



STAR BOTTLES

## 100 ML PET BOTTLE SQUARE BLUE

**Categories:** [Body Care](#), [Face Care](#), [Hair Care](#)

**CODE:**I-001748

**COLOUR:**BLUE

**MOC:**PET

**NECK SIZE (MM):**20

**WEIGHT:**13.5

**SHAPE:**SQUARE

**TOTAL HEIGHT(CM):**12

**VOLUME:**100 ML

**MASTER CARTON:**792/BOX



STAR BOTTLES

## 100 ML HDPE BOTTLE JASMIN

**Categories:** [Body Care](#), [Face Care](#), [Hair Care](#)

**CODE:**I-001345

**COLOUR:**BLACK

**MOC:**HDPE

**NECK SIZE (MM):**25

**WEIGHT:**17

**SHAPE:**FLAT

**TOTAL HEIGHT(CM):**15

**VOLUME:**200 ML

**MASTER CARTON:**2000/BAG



STAR BOTTLES

## 10 ML PET ROLL ON BOTTLE

**Categories:** [Body Care](#)

**CODE:**I-000911

**COLOUR:**TRANSPARENT

**MOC:**PET

**NECK SIZE (MM):**15

**WEIGHT:**6

**SHAPE:**ROUND

**TOTAL HEIGHT(CM):**9

**VOLUME:**10 ML

**MASTER CARTON:**3000/BOX



STAR BOTTLES

## 25 ML PET BOTTLE ROUND

**Categories:** [Body Care](#), [Face Care](#), [Hair Care](#)

**CODE:**I-000157

**COLOUR:**TRANSPARENT

**MOC:**PET

**NECK SIZE (MM):**15

**WEIGHT:**4

**SHAPE:**ROUND

**TOTAL HEIGHT(CM):**7

**VOLUME:**25 ML

**MASTER CARTON:**2800/BOX



STAR BOTTLES

## 20 ML PET BOTTLE LOTION WITH FLIP CAP

**Categories:** [Body Care](#), [Face Care](#)

**CODE:**I-000467

**COLOUR:**TRANSPARENT

**MOC:**PET

**NECK SIZE (MM):**15

**WEIGHT:**4

**SHAPE:**FLAT

**TOTAL HEIGHT(CM):**7

**VOLUME:**20 ML

**MASTER CARTON:**1200/BOX



## 100 ML PET JAR APPLE SHAPED

**Categories:** [Body Care](#), [Face Care](#), [Hair Care](#), [Powders & Lehyams](#)

**CODE:**I-001249

**COLOUR:**TRASPARENT

**MOC:**PET

**NECK SIZE (MM):**53

**WEIGHT:**13

**SHAPE:**ROUND

**TOTAL HEIGHT(CM):**6

**VOLUME:**100 ML

**MASTER CARTON:**500/BAG



## 200 ML PET JAR APPLE SHAPED

**Categories:** [Body Care](#), [Face Care](#), [Hair Care](#), [Powders & Lehyams](#)

**CODE:**I-001253

**COLOUR:**TRASPARENT

**MOC:**PET

**NECK SIZE (MM):**63

**WEIGHT:**21

**SHAPE:**ROUND

**TOTAL HEIGHT(CM):**7

**VOLUME:**200 ML

**MASTER CARTON:**300/BAG



STAR BOTTLES

## 100 ML PET BOTTLE SQUARE

**Categories:** [Body Care](#), [Face Care](#), [Hair Care](#)

**CODE:**I-001261

**IDEAL FOR PACKING:**Syrup, Thailam

**COLOUR:**TRANSPARENT

**MOC:**PET

**NECK SIZE (MM):**25

**WEIGHT:**16

**SHAPE:**SQUARE

**TOTAL HEIGHT(CM):**10

**VOLUME:**100 ML

**OVERFLOW CAPACITY:**107 ML

**MASTER CARTON:**525/BOX

**NECK PATTERN:**NA



STAR BOTTLES

## 50 ML PET BOTTLE SQUARE

**Categories:** [Body Care](#), [Face Care](#), [Hair Care](#)

**CODE:**I-000472

**COLOUR:**TRANSPARENT

**MOC:**PET

**NECK SIZE (MM):**20

**WEIGHT:**9

**SHAPE:**SQUARE

**TOTAL HEIGHT(CM):**9

**VOLUME:**50 ML

**MASTER CARTON:**1512/BOX



STAR BOTTLES

## 100 ML PET BOTTLE BOSTON

**Categories:** [Airfreshners & Sprays](#), [Body Care](#), [Face Care](#), [Hair Care](#), [Handwash & Sanitizers](#)

**CODE:**I-000488

**COLOUR:**TRANSPARENT

**MOC:**PET

**NECK SIZE (MM):**19

**WEIGHT:**11.5

**SHAPE:**ROUND

**TOTAL HEIGHT(CM):**12

**VOLUME:**100 ML

**MASTER CARTON:**792/BOX



STAR BOTTLES

## 150 ML ROSE WATER BOTTLE

**Categories:** [Body Care](#)

**CODE:**I-001358

**COLOUR:**TRANSPARENT

**MOC:**PET

**NECK SIZE (MM):**18

**WEIGHT:**13

**SHAPE:**ROUND

**TOTAL HEIGHT(CM):**17

**VOLUME:**150 ML

**MASTER CARTON:**10/GROSS





STAR BOTTLES

## 50 ML MILAN BOTTLE WITH MIST PUMP

**Categories:** [Body Care](#), [Face Care](#), [Hair Care](#)

**CODE:**I-000348

**COLOUR:**TRANSPARENT

**MOC:**PET

**NECK SIZE (MM):**24

**WEIGHT:**23

**SHAPE:**ROUND

**TOTAL HEIGHT(CM):**12

**VOLUME:**50 ML

**MASTER CARTON:**990/BOX



STAR BOTTLES

## 100 ML MILAN BOTTLE WITH SERUM PUMP

**Categories:** [Body Care](#), [Face Care](#), [Hair Care](#)

**CODE:**I-000027

**COLOUR:**TRANSPARENT

**MOC:**PET

**NECK SIZE (MM):**24

**WEIGHT:**32

**SHAPE:**ROUND

**TOTAL HEIGHT(CM):**14

**VOLUME:**100 ML

**MASTER CARTON:**780/BOX



STAR BOTTLES

## 200 ML MILAN BOTTLE WITH SERUM PUMP

**Categories:** [Body Care](#), [Face Care](#), [Hair Care](#)

**CODE:**I-000107

**COLOUR:**TRANSPARENT

**MOC:**PET

**NECK SIZE (MM):**24

**WEIGHT:**38

**SHAPE:**ROUND

**TOTAL HEIGHT(CM):**17

**VOLUME:**200 ML

**MASTER CARTON:**297/BOX



STAR BOTTLES

## 100 ML JLI PET BOTTLE

**Categories:** [Body Care](#), [Face Care](#), [Hair Care](#), [Handwash & Sanitizers](#)

**CODE:**I-001016

**COLOUR:**TRANSPARENT

**MOC:**PET

**NECK SIZE (MM):**20

**WEIGHT:**13

**SHAPE:**ROUND

**TOTAL HEIGHT(CM):**12

**VOLUME:**100 ML

**MASTER CARTON:**780/BAG



STAR BOTTLES

## 100 ML OVAL PET BOTTLE

**Categories:** [Body Care](#), [Face Care](#), [Hair Care](#)

**CODE:**I-001225

**COLOUR:**TRANSPARENT

**MOC:**PET

**NECK SIZE (MM):**20

**WEIGHT:**13

**SHAPE:**ROUND

**TOTAL HEIGHT(CM):**14

**VOLUME:**100 ML

**MASTER CARTON:**600/BAG



STAR BOTTLES

## 200 ML JLI PET BOTTLE

**Categories:** [Body Care](#), [Face Care](#), [Hair Care](#)

**CODE:**I-001025

**COLOUR:**TRANSPARENT

**MOC:**PET

**NECK SIZE (MM):**24

**WEIGHT:**22

**SHAPE:**ROUND

**TOTAL HEIGHT(CM):**15

**VOLUME:**200 ML

**MASTER CARTON:**360/BOX



STAR BOTTLES

## 200 ML JASMINE BOTTLE BLACK

**Categories:** [Body Care](#), [Face Care](#), [Hair Care](#)

**CODE:**I-001360

**COLOUR:**BLACK

**MOC:**HDPE

**NECK SIZE (MM):**25

**WEIGHT:**24

**SHAPE:**FLAT

**TOTAL HEIGHT(CM):**18

**VOLUME:**200 ML

**MASTER CARTON:**250/BAG



STAR BOTTLES

## 100 GM SAN JAR

**Categories:** [Body Care](#), [Face Care](#), [Hair Care](#)

**CODE:**I-000466

**COLOUR:**NATURAL

**MOC:**ACRYLIC

**NECK SIZE (MM):**58

**WEIGHT:**55

**SHAPE:**ROUND

**TOTAL HEIGHT(CM):**6

**VOLUME:**100 GM

**MASTER CARTON:**250/BAG



STAR BOTTLES

## 200 ML CORAL BOTTLE

**Categories:** [Body Care](#), [Face Care](#), [Hair Care](#)

**CODE:**I-001653

**COLOUR:**WHITE

**MOC:**HDPE

**NECK SIZE (MM):**19

**WEIGHT:**27

**SHAPE:**FLAT

**TOTAL HEIGHT(CM):**18

**VOLUME:**200 ML

**MASTER CARTON:**350/BOX



STAR BOTTLES

## 50 GM SAN JAR

**Categories:** [Body Care](#), [Face Care](#), [Hair Care](#)

**CODE:**I-000465

**COLOUR:**NATURAL

**MOC:**ACRYLIC

**NECK SIZE (MM):**59

**WEIGHT:**41

**SHAPE:**ROUND

**TOTAL HEIGHT(CM):**4

**VOLUME:**50 GM

**MASTER CARTON:**336/BAG



STAR BOTTLES

## 25 GM SAN JAR

**Categories:** [Body Care](#), [Face Care](#), [Hair Care](#)

**CODE:**I-001014

**COLOUR:**NATURAL

**MOC:**ACRYLIC

**NECK SIZE (MM):**48

**WEIGHT:**29

**SHAPE:**ROUND

**TOTAL HEIGHT(CM):**3

**VOLUME:**25 GM

**MASTER CARTON:**330/BOX



STAR BOTTLES

## 5 GM SAN JAR

**Categories:** [Body Care](#), [Eye Care](#), [Face Care](#), [Hair Care](#), [Lipcare](#)

**CODE:**I-001005

**COLOUR:**NATURAL

**MOC:**ACRYLIC

**NECK SIZE (MM):**27

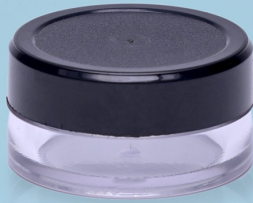
**WEIGHT:**8

**SHAPE:**ROUND

**TOTAL HEIGHT(CM):**2

**VOLUME:**5 GM

**MASTER CARTON:**500/BAG



## 8 GM SAN JAR

**Categories:** [Body Care](#), [Eye Care](#), [Face Care](#), [Hair Care](#), [Lipcare](#)

**CODE:**I-001006

**COLOUR:**NATURAL

**MOC:**ACRYLIC

**NECK SIZE (MM):**34

**WEIGHT:**13

**SHAPE:**ROUND

**TOTAL HEIGHT(CM):**2

**VOLUME:**8 GM

**MASTER CARTON:**1200/BAG



## 50 GM DOUBLE WALL CREAM JAR

**Categories:** [Body Care](#), [Face Care](#), [Hair Care](#)

**CODE:**I-001747

**COLOUR:**WHITE

**MOC:**HDPE

**NECK SIZE (MM):**53

**WEIGHT:**31

**SHAPE:**ROUND

**TOTAL HEIGHT(CM):**5

**VOLUME:**50 GM

**MASTER CARTON:**400/BAG





STAR BOTTLES

## 15 GM FLAT CREAM JAR

**Categories:** [Body Care](#), [Face Care](#), [Hair Care](#)

**CODE:**I-001655

**COLOUR:**WHITE

**MOC:**HDPE

**NECK SIZE (MM):**47

**WEIGHT:**7

**SHAPE:**ROUND

**TOTAL HEIGHT(CM):**2

**VOLUME:**15 GM

**MASTER CARTON:**500/BAG



STAR BOTTLES

## 500 ML PET JAR MILKY WHITE

**Categories:** [Body Care](#), [Face Care](#), [HDPE](#), [Powders & Lehyams](#), [Tablet & Capsule Containers](#)

**CODE:**I-000847

**IDEAL FOR PACKING:**Granules, Jam, Lehyam, Powder, Pulses

**COLOUR:**MILKY WHITE

**MOC:**PET

**NECK SIZE (MM):**73

**WEIGHT:**36

**SHAPE:**ROUND

**TOTAL HEIGHT(CM):**13

**VOLUME:**500 ML

**OVERFLOW CAPACITY:**510 ML

**MASTER CARTON:**113/BAG

**NECK PATTERN:**NA





STAR BOTTLES

## 100 GM AMBER ACRYLIC JAR

**Categories:** [Body Care](#), [Face Care](#), [Hair Care](#)

**CODE:**I-001553

**COLOUR:**AMBER

**MOC:**ACRYLIC

**NECK SIZE (MM):**59

**WEIGHT:**63

**SHAPE:**ROUND

**TOTAL HEIGHT(CM):**6

**VOLUME:**100 GM

**MASTER CARTON:**500/BOX



STAR BOTTLES

## 20 ML ACE

**Categories:** [Body Care](#)

**CODE:**I-001306

**COLOUR:**WHITE

**MOC:**LD

**NECK SIZE (MM):**14

**WEIGHT:**6

**SHAPE:**FLAT

**TOTAL HEIGHT(CM):**8

**VOLUME:**20 ML

**MASTER CARTON:**5000/BAG



STAR BOTTLES

## 25 ML TOILETERY BOTTLE

Categories: [Body Care](#)

**CODE:**I-001309

**COLOUR:**WHITE

**MOC:**LD

**NECK SIZE (MM):**15

**WEIGHT:**6

**SHAPE:**FLAT

**TOTAL HEIGHT(CM):**8

**VOLUME:**25 ML

**MASTER CARTON:**5000/BAG



STAR BOTTLES

## 10 GM BALM CONTAINER

Categories: [Body Care](#), [Face Care](#), [Powders & Lehyams](#)

**CODE:**I-000042

**COLOUR:**VIRGIN

**MOC:**PP

**NECK SIZE (MM):**27

**WEIGHT:**6

**SHAPE:**ROUND

**TOTAL HEIGHT(CM):**4

**VOLUME:**10 GM

**MASTER CARTON:**5000/BAG



STAR BOTTLES

## 20 ML FLAT TOILETRY CONTAINER

Categories: [Body Care](#)

CODE:I-001308

COLOUR:WHITE

MOC:LD

NECK SIZE (MM):15

WEIGHT:6

SHAPE:FLAT

TOTAL HEIGHT(CM):7

VOLUME:20 ML

MASTER CARTON:5000/BAG



STAR BOTTLES

## 50 GM FROSTED GLASS JAR

Categories: [Body Care](#), [Face Care](#), [Hair Care](#)

CODE:I-001683

COLOUR:FROSTED

MOC:GLASS

NECK SIZE (MM):50

WEIGHT:101

SHAPE:ROUND

TOTAL HEIGHT(CM):4

VOLUME:50 GM

MASTER CARTON:96/BOX



STAR BOTTLES

## 30 GM FROSTED GLASS JAR

**Categories:** [Body Care](#), [Face Care](#), [Hair Care](#)

**CODE:**I-001681

**COLOUR:**FROSTED

**MOC:**GLASS

**NECK SIZE (MM):**46

**WEIGHT:**77

**SHAPE:**ROUND

**TOTAL HEIGHT(CM):**4

**VOLUME:**30 GM

**MASTER CARTON:**114/BOX



STAR BOTTLES

## 100 GM FROSTED GLASS JAR

**Categories:** [Body Care](#), [Face Care](#), [Hair Care](#)

**CODE:**I-001684

**COLOUR:**FROSTED

**MOC:**GLASS

**NECK SIZE (MM):**55

**WEIGHT:**123

**SHAPE:**ROUND

**TOTAL HEIGHT(CM):**7

**VOLUME:**100 GM

**MASTER CARTON:**105/BOX



STAR BOTTLES

## 50 GM THICK WALL CREAM JAR

**Categories:** [Body Care](#), [Face Care](#), [Hair Care](#)

**CODE:**I-001660

**COLOUR:**WHITE

**MOC:**HDPE

**NECK SIZE (MM):**60

**WEIGHT:**27

**SHAPE:**ROUND

**TOTAL HEIGHT(CM):**6

**VOLUME:**50 GM

**MASTER CARTON:**500/BAG



STAR BOTTLES

## 50 ML BODY ROLL ON BOTTLE

**Categories:** [Body Care](#)

**CODE:**I-000913

**COLOUR:**WHITE

**MOC:**HDPE

**NECK SIZE (MM):**33

**WEIGHT:**22

**SHAPE:**ROUND

**TOTAL HEIGHT(CM):**10

**VOLUME:**50 ML

**MASTER CARTON:**500/BAG



## 50 GM CREAM JAR [SILVER RING]

Categories: [Body Care](#), [Face Care](#), [Hair Care](#)



## 100 GM DOUBLE WALL CREAME JAR WITH GOLD RING

Categories: [Body Care](#), [Face Care](#), [Hair Care](#)

**CODE:**I-000016

**COLOUR:**WHITE

**MOC:**HDPE

**NECK SIZE (MM):**70

**WEIGHT:**46

**SHAPE:**ROUND

**TOTAL HEIGHT(CM):**6

**VOLUME:**100 GM

**MASTER CARTON:**330/BOX



## 100 ML HDPE BOTTLE JUPITER

**Categories:** [Body Care](#), [Face Care](#), [Hair Care](#), [Pharma Bottles](#)

**CODE:**I-001347

**COLOUR:**WHITE

**MOC:**HDPE

**NECK SIZE (MM):**20

**WEIGHT:**17

**SHAPE:**FLAT

**TOTAL HEIGHT(CM):**15

**VOLUME:**100 ML

**MASTER CARTON:**500/BAG



## 100 ML OVAL LONG FTC

**Categories:** [Body Care](#), [Face Care](#), [Hair Care](#), [Pharma Bottles](#)

**CODE:**I-001381

**COLOUR:**WHITE

**MOC:**HDPE

**NECK SIZE (MM):**20

**WEIGHT:**19

**SHAPE:**FLAT

**TOTAL HEIGHT(CM):**15

**VOLUME:**100 ML

**MASTER CARTON:**500/BAG





## 100 ML THUMB SPRAY BOTTLE

**Categories:** [Airfreshners & Sprays](#), [Body Care](#), [Face Care](#), [FERTILIZERS & PESTICIDES](#), [Hair Care](#)

**CODE:**I-001357

**COLOUR:**WHITE

**MOC:**HDPE

**NECK SIZE (MM):**20

**WEIGHT:**21

**SHAPE:**ROUND

**TOTAL HEIGHT(CM):**16

**VOLUME:**100 ML

**MASTER CARTON:**500/BAG



## 50 GM PLASTIC JAR REGULAR

**Categories:** [Body Care](#), [Face Care](#)

**CODE:**I-000054

**COLOUR:**WHITE

**MOC:**HDPE

**NECK SIZE (MM):**34

**WEIGHT:**25

**SHAPE:**ROUND

**TOTAL HEIGHT(CM):**6

**VOLUME:**50 GM

**MASTER CARTON:**25/GROSS/BAG





## 50 ML ACE BOTTLE

**Categories:** [Body Care](#), [Face Care](#), [Hair Care](#), [Pharma Bottles](#)

**CODE:**I-001337

**COLOUR:**WHITE

**MOC:**HDPE

**NECK SIZE (MM):**20

**WEIGHT:**13

**SHAPE:**FLAT

**TOTAL HEIGHT(CM):**12

**VOLUME:**50 ML

**MASTER CARTON:**750/BAG



## 100 ML SELFIE BOTTLE

**Categories:** [Body Care](#), [Pharma Bottles](#)

**CODE:**I-001387

**COLOUR:**WHITE

**MOC:**HDPE

**NECK SIZE (MM):**20

**WEIGHT:**17

**SHAPE:**ROUND

**TOTAL HEIGHT(CM):**16

**VOLUME:**100 ML

**MASTER CARTON:**500/BAG



## 500 ML PARACHUTE BOTTLE

**Categories:** [Body Care](#), [FERTILIZERS & PESTICIDES](#), [Hair Care](#), [Laundry](#), [Pharma Bottles](#)

**CODE:**I-001373

**COLOUR:**WHITE

**MOC:**HDPE

**NECK SIZE (MM):**28

**WEIGHT:**33

**SHAPE:**ROUND

**TOTAL HEIGHT(CM):**20

**VOLUME:**500 ML

**MASTER CARTON:**500/BAG

---



## 50 ML THUMB SPRAY BOTTLE

**Categories:** [Airfreshners & Sprays](#), [Body Care](#), [Face Care](#), [FERTILIZERS & PESTICIDES](#), [Hair Care](#)

**CODE:**I-001341

**COLOUR:**WHITE

**MOC:**HDPE

**NECK SIZE (MM):**18

**WEIGHT:**14

**SHAPE:**ROUND

**TOTAL HEIGHT(CM):**12

**VOLUME:**50 ML

**MASTER CARTON:**4000/BAG

---



## 100 ML PARACHUTE BOTTLE

**Categories:** [Body Care](#), [FERTILIZERS & PESTICIDES](#), [Hair Care](#), [Pharma Bottles](#)

**CODE:**I-001349

**COLOUR:**WHITE

**MOC:**HDPE

**NECK SIZE (MM):**20

**WEIGHT:**11

**SHAPE:**ROUND

**TOTAL HEIGHT(CM):**11

**VOLUME:**100 ML

**MASTER CARTON:**2000/BAG



## 200 ML THUMB SPRAY BOTTLE

**Categories:** [Airfreshners & Sprays](#), [Body Care](#), [Face Care](#), [FERTILIZERS & PESTICIDES](#), [Hair Care](#)

**CODE:**I-001365

**COLOUR:**WHITE

**MOC:**HDPE

**NECK SIZE (MM):**25

**WEIGHT:**30

**SHAPE:**ROUND

**TOTAL HEIGHT(CM):**20

**VOLUME:**200 ML

**MASTER CARTON:**250/BAG



STAR BOTTLES

## 100 GM FACE PACK JAR

**Categories:** [Body Care](#), [Face Care](#)

**CODE:**I-001453

**COLOUR:**WHITE

**MOC:**HDPE

**NECK SIZE (MM):**72

**WEIGHT:**22

**SHAPE:**ROUND

**TOTAL HEIGHT(CM):**6

**VOLUME:**100 GM

**MASTER CARTON:**1250/BAG



STAR BOTTLES

## 200 ML ROUND LONG BOTTLE WITH FLIP CAP

**Categories:** [Body Care](#), [Face Care](#), [FERTILIZERS & PESTICIDES](#), [Hair Care](#), [Pharma Bottles](#)

**CODE:**I-001363

**COLOUR:**WHITE

**MOC:**HDPE

**NECK SIZE (MM):**25

**WEIGHT:**30

**SHAPE:**ROUND

**TOTAL HEIGHT(CM):**18

**VOLUME:**200 ML

**MASTER CARTON:**250/BAG



STAR BOTTLES

## 200 ML TIARA

**Categories:** [Body Care](#), [Face Care](#), [Hair Care](#)

**CODE:**I-001651

**COLOUR:**WHITE

**MOC:**HDPE

**NECK SIZE (MM):**NIL

**WEIGHT:**28

**SHAPE:**FLAT

**TOTAL HEIGHT(CM):**18

**MASTER CARTON:**350/BOX



STAR BOTTLES

## 200 ML PET AVON AMBER BOTTLE WITH LOTION PUMP

**Categories:** [Body Care](#), [Face Care](#), [Hair Care](#)

**CODE:**I-001001

**COLOUR:**AMBER

**MOC:**PET

**NECK SIZE (MM):**24/410

**WEIGHT:**23

**SHAPE:**ROUND

**TOTAL HEIGHT(CM):**15

**VOLUME:**200 ML

**MASTER CARTON:**360/BOX



STAR BOTTLES

## 200 ML PET JLI AMBER BOTTLE WITH GOLDEN FTC

**Categories:** [Body Care](#), [Face Care](#), [Hair Care](#)

**CODE:**I-001002

**COLOUR:**AMBER

**MOC:**PET

**NECK SIZE (MM):**24/410

**WEIGHT:**23

**SHAPE:**ROUND

**TOTAL HEIGHT(CM):**15

**VOLUME:**200 ML

**MASTER CARTON:**360/BOX



STAR BOTTLES

## 200 ML JASMIN WHITE

**Categories:** [Body Care](#), [Face Care](#), [FERTILIZERS & PESTICIDES](#), [Hair Care](#), [Pharma Bottles](#)

**CODE:**I-001359

**COLOUR:**WHITE

**MOC:**HDPE

**NECK SIZE (MM):**25

**WEIGHT:**23

**SHAPE:**FLAT

**TOTAL HEIGHT(CM):**18

**VOLUME:**200 ML

**MASTER CARTON:**250/BAG



## 100 ML VENUS

**Categories:** [Body Care](#), [Face Care](#), [FERTILIZERS & PESTICIDES](#), [Hair Care](#), [Pharma Bottles](#)

**CODE:**I-001353

**COLOUR:**WHITE

**MOC:**HDPE

**NECK SIZE (MM):**20

**WEIGHT:**18

**SHAPE:**FLAT

**TOTAL HEIGHT(CM):**14

**VOLUME:**100 ML

**MASTER CARTON:**500/BAG



## 210 ML ROUND BOTTLE WITH FLIP CAP

**Categories:** [Body Care](#), [Face Care](#), [FERTILIZERS & PESTICIDES](#), [Hair Care](#), [Pharma Bottles](#)

**CODE:**I-001366

**COLOUR:**WHITE

**MOC:**HDPE

**NECK SIZE (MM):**24

**WEIGHT:**26

**SHAPE:**ROUND

**TOTAL HEIGHT(CM):**17

**VOLUME:**210 ML

**MASTER CARTON:**250/BAG



## 100 ML TIARA

**Categories:** [Body Care](#), [Face Care](#), [Hair Care](#), [Pharma Bottles](#)

**CODE:**I-001650

**COLOUR:**WHITE

**MOC:**HDPE

**NECK SIZE (MM):**NIL

**WEIGHT:**22

**SHAPE:**FLAT

**TOTAL HEIGHT(CM):**12

**MASTER CARTON:**600/BOX



## 100 ML ACE

**Categories:** [Body Care](#), [Face Care](#), [Hair Care](#), [Pharma Bottles](#)

**CODE:**I-001344

**COLOUR:**WHITE

**MOC:**HDPE

**NECK SIZE (MM):**20/415

**WEIGHT:**22

**SHAPE:**FLAT

**TOTAL HEIGHT(CM):**15

**VOLUME:**100 ML

**MASTER CARTON:**500/BAG





STAR BOTTLES

## 100 ML CORAL

**Categories:** [Body Care](#), [Face Care](#), [Hair Care](#)

**CODE:**I-001652

**COLOUR:**WHITE

**MOC:**HDPE

**NECK SIZE (MM):**NIL

**WEIGHT:**20

**SHAPE:**FLAT

**TOTAL HEIGHT(CM):**15

**MASTER CARTON:**600/BOX



STAR BOTTLES

## 250 ML VEGA JAR

**Categories:** [Body Care](#), [Face Care](#), [FERTILIZERS & PESTICIDES](#), [HDPE](#), [Powders & Lehyams](#), [Tablet & Capsule Containers](#)

**CODE:**I-001463

**COLOUR:**WHITE

**MOC:**HDPE

**NECK SIZE (MM):**53

**WEIGHT:**23

**SHAPE:**SQUARE

**TOTAL HEIGHT(CM):**11

**VOLUME:**250 ML

**MASTER CARTON:**160/BAG



## 500 ML ROUND LONG BOTTLE WITH FLIP CAP

**Categories:** [Body Care](#), [FERTILIZERS & PESTICIDES](#),  
[Hair Care](#), [Laundry](#)

**CODE:**I-001374

**COLOUR:**WHITE

**MOC:**HDPE

**NECK SIZE (MM):**24/415

**WEIGHT:**50

**SHAPE:**ROUND

**TOTAL HEIGHT(CM):**23

**VOLUME:**500 ML

**MASTER CARTON:**600/BAG



## 1000 ML ROUND SEALED BOTTLE

**Categories:** [Body Care](#), [FERTILIZERS & PESTICIDES](#),  
[Glass/Floor/Toilet Cleaner](#)

**CODE:**I-001380

**COLOUR:**WHITE

**MOC:**HDPE

**NECK SIZE (MM):**28

**WEIGHT:**64

**SHAPE:**ROUND

**TOTAL HEIGHT(CM):**23

**VOLUME:**1000 ML

**MASTER CARTON:**288/BAG